

Time shifting with WebShifter

ShowShifter's younger cousin schedules TV recordings on your PC

WebShifter will record TV programmes easily on your PC, much more so than a video recorder ever did; but the initial configuration is a little painful at first.

You need to set WebShifter up to run in tandem with whatever PVR or media centre application you use. As the name suggests it was originally created as an add-in for ShowShifter, and we recommend that you use it with this.

WebShifter will take you to places you never even dreamed existed, from SourceForge, the place where software stars are born, to subdirectories of your program installation that you'll need to find by typing their directory path into Windows Explorer.

You need a TV card in your PC and your choice of media centre or PVR – we recommend you use ShowShifter – that is downloading TV guide data. You

also need a software package, which helps you use XMLtv listings, and the makers of WebShifter recommend the XMLtv Grabber from <http://members.com/work/apps/XMLtv/> (you'll be redirected to SourceForge for the download, and should choose the 'Win 32 Zip' option). Our step-by-step guide will explain the most complex parts of the process, so that you can get on with recording your TV programs in peace.

Setting up WebShifter



1 First, make sure you've installed ShowShifter. Then install and run WebShifter in the normal manner. At first it will throw up a few pseudo errors like this one, but just click 'OK' anyway.



2 You'll see that, despite the earlier messages, WebShifter is actually busy creating the directories it was telling you weren't there! Click on the 'OK' button to enter the WebShifter 'Configuration wizard'.



3 You need to choose which PVR or media centre program you use. We can't say this enough – use ShowShifter. It's the easiest to use and you can always change WebShifter's settings if you find one you like better.



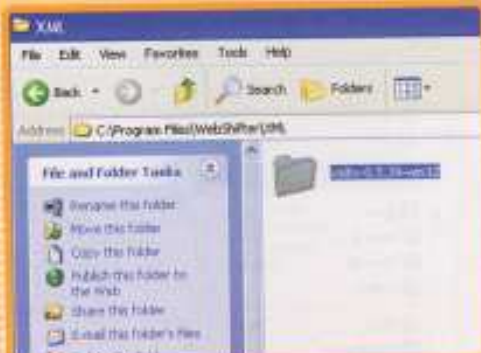
4 To access the program's interface open your web browser and go to <http://localhost>. You're only accessing your own computer, but WebShifter does pretty much everything via the web, so humour it.

Jargon Buster

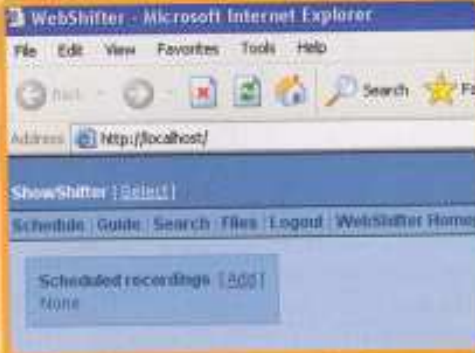
PVR

PVR stands for 'Personal Video Recorder'. It was easy in the days when you could just point at the black box beneath the TV, and grunt 'video', but now it's the 21st century, and a PVR can be anything from your old VHS to a software package on your PC.

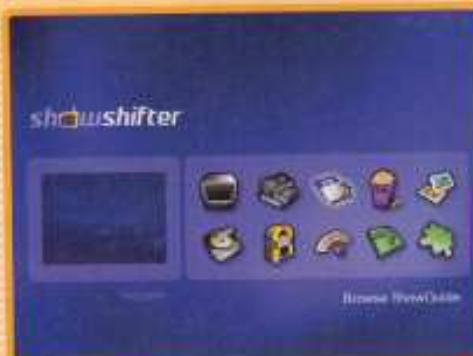
Setting up WebShifter (continued)



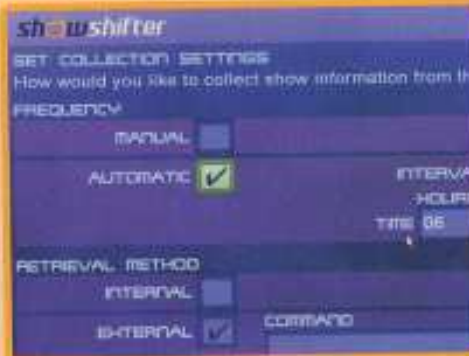
- 5 You need to add the SourceForge download into WebShifter. Open Windows Explorer, type 'C:\Program Files\WebShifter\XML' into the address bar and copy the download across to this folder.



- 6 Open your web browser and navigate to <http://localhost> and, finally, here it is – WebShifter. Take some time to familiarise yourself with the program interface, then click 'Add' next to 'Scheduled Recordings'.



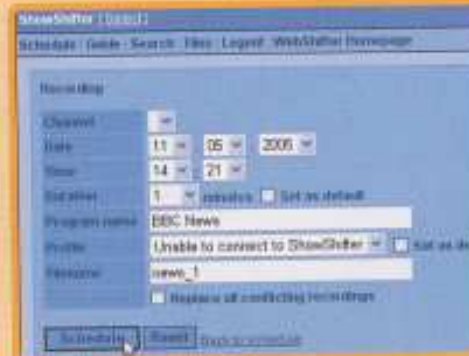
- 7 ShowShifter (or your chosen program) will open. Click on the TV guide icon to continue with the process of setting up a scheduled TV recording. It takes a while and is complex, but it's much easier when you've done once.



- 8 If you haven't used ShowShifter before you'll need to get it to start collecting data from the internet about TV listings. Luckily this is a matter of pressing a few buttons, which you'll be guided through by ShowShifter.



- 9 Finally, something which resembles the task that you're trying to do! Type in the name of the programme that you want to record into ShowShifter's Search function and hit the magnifying glass icon.



- 10 And here, in WebShifter, is what you should see every time you try to record a TV programme. It is much quicker to set up recordings after the first time, so it is worth the initial effort.

Jargon Buster

XMLtv

XML, or Extensible Markup Language, is a way of creating 'markup languages' – such as 'Hypertext Markup Language' (HTML) that powers the internet. XMLtv is a language designed to create and command programs relating to TV – such as programme guides.

Tip!

You can view the WebShifter server logs by going to its icon in the task bar (a blue camera), right-clicking on it and choosing 'Log' from the menu. To view the program interface without using your browser, select 'Show'.